

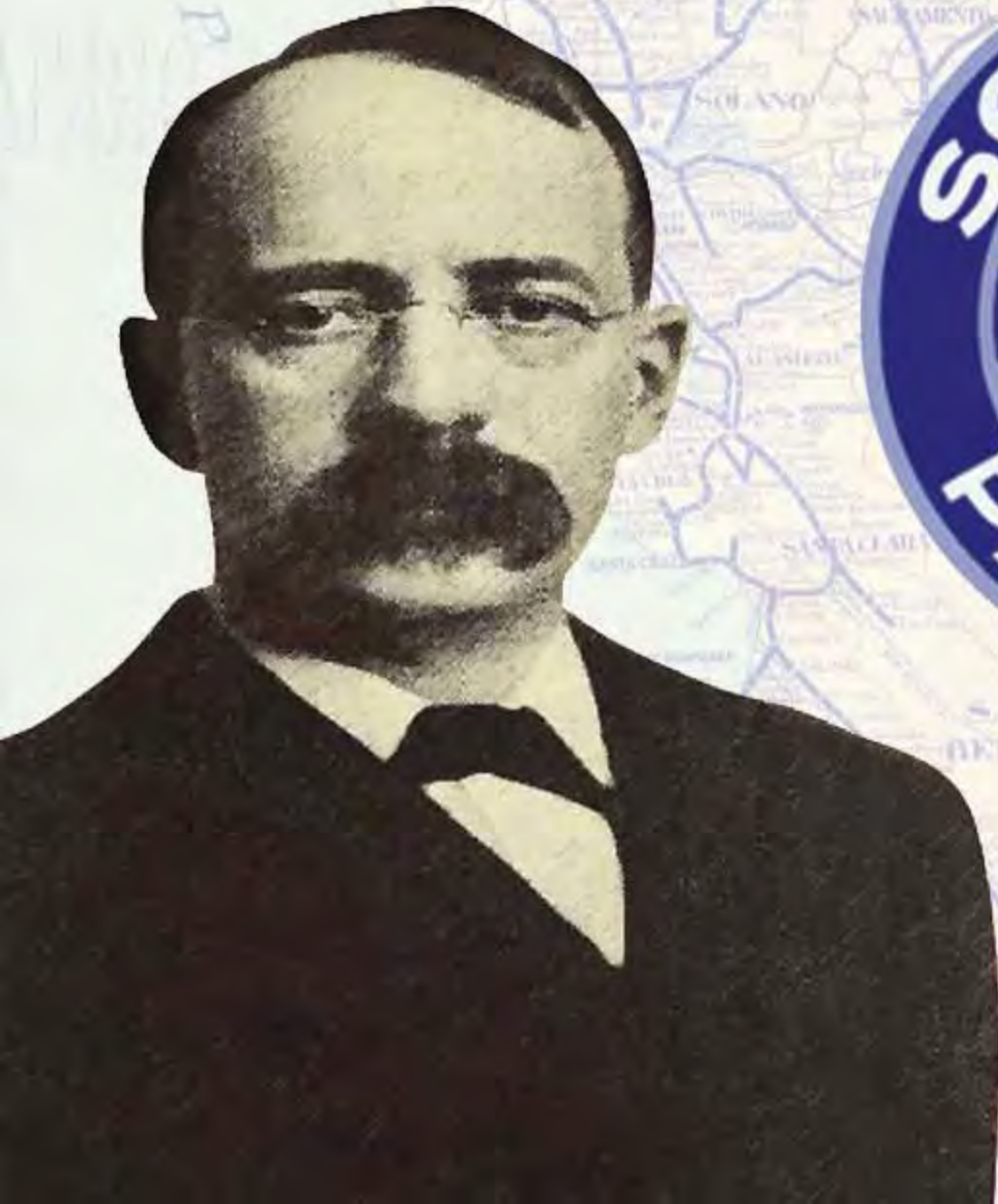


Western Pacific Railroad Museum

Toward the Future

“If you build that railroad... I will KILL you.”

- Edward H. Harriman
chairman, Union Pacific Railroad
president, Southern Pacific Railroad



THE CURSE OF CALIFORNIA.

E. H. Harriman



George J. Gould



E. H. Harriman



George J. Gould

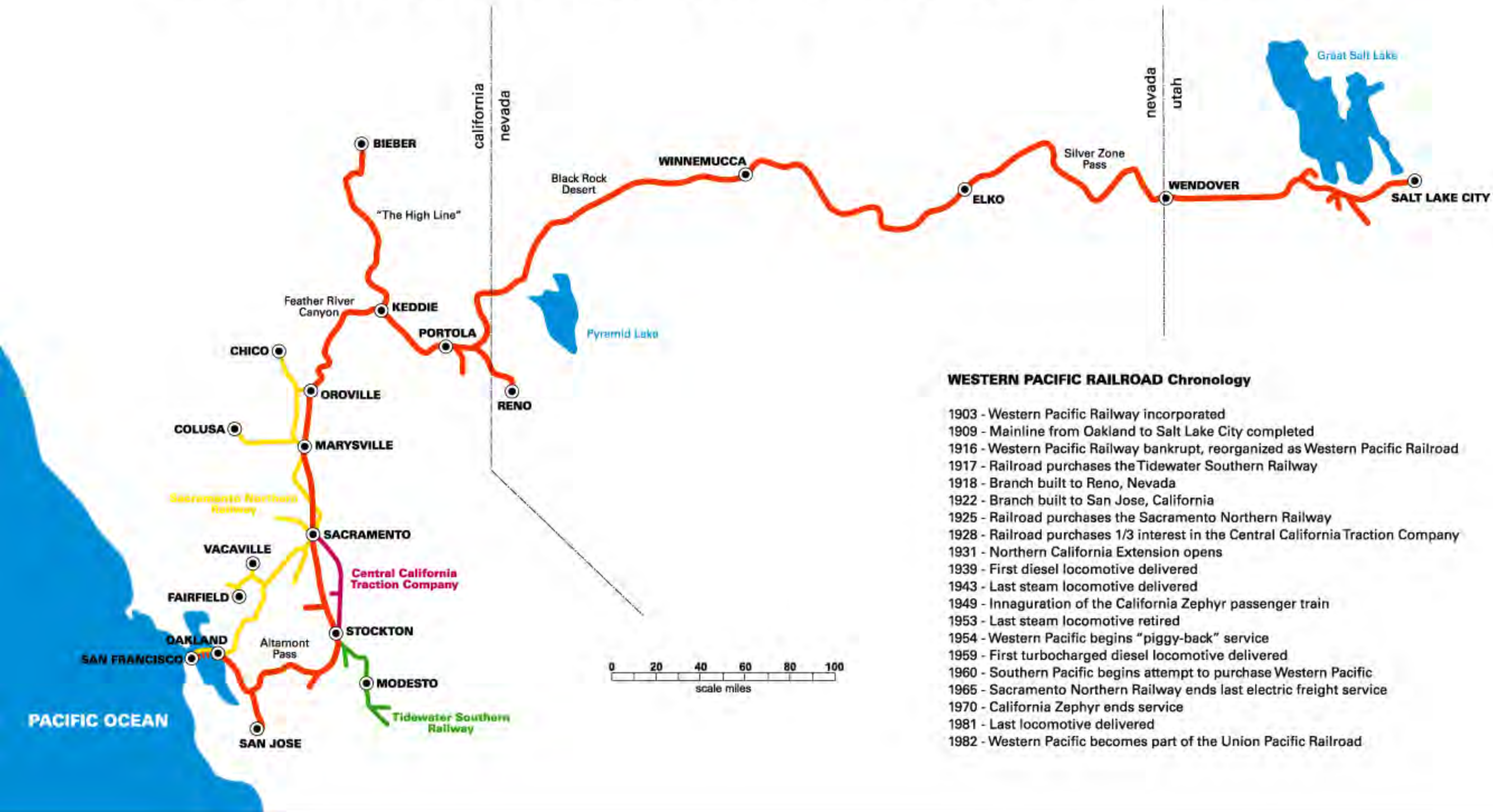


Walter Bartnett





Western Pacific Railroad and major subsidiaries



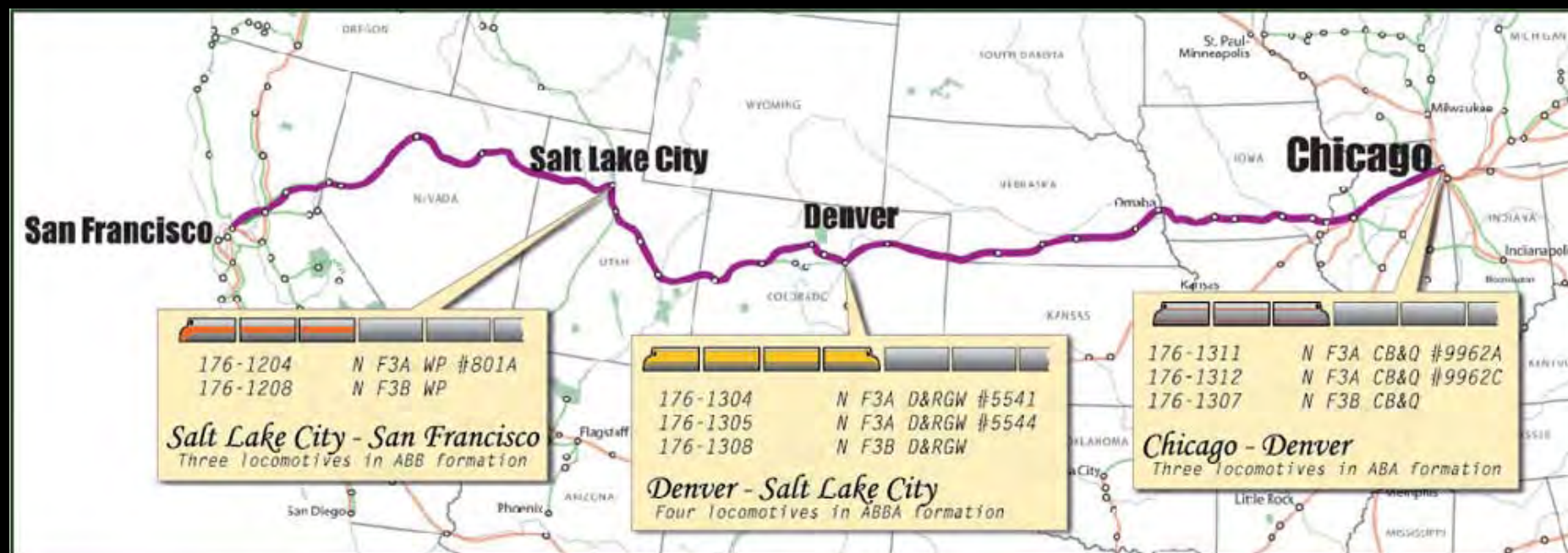
WESTERN PACIFIC RAILROAD Chronology

- 1903 - Western Pacific Railway incorporated
- 1909 - Mainline from Oakland to Salt Lake City completed
- 1916 - Western Pacific Railway bankrupt, reorganized as Western Pacific Railroad
- 1917 - Railroad purchases the Tidewater Southern Railway
- 1918 - Branch built to Reno, Nevada
- 1922 - Branch built to San Jose, California
- 1925 - Railroad purchases the Sacramento Northern Railway
- 1928 - Railroad purchases 1/3 interest in the Central California Traction Company
- 1931 - Northern California Extension opens
- 1939 - First diesel locomotive delivered
- 1943 - Last steam locomotive delivered
- 1949 - Inauguration of the California Zephyr passenger train
- 1953 - Last steam locomotive retired
- 1954 - Western Pacific begins "piggy-back" service
- 1959 - First turbocharged diesel locomotive delivered
- 1960 - Southern Pacific begins attempt to purchase Western Pacific
- 1965 - Sacramento Northern Railway ends last electric freight service
- 1970 - California Zephyr ends service
- 1981 - Last locomotive delivered
- 1982 - Western Pacific becomes part of the Union Pacific Railroad



**Dieselization . Computers . Modern Passenger Trains . Central Dispatching . Development
Advanced Freight Cars . Roller Bearings . Concrete Ties . Advanced Technology**









RR DONNELLEY

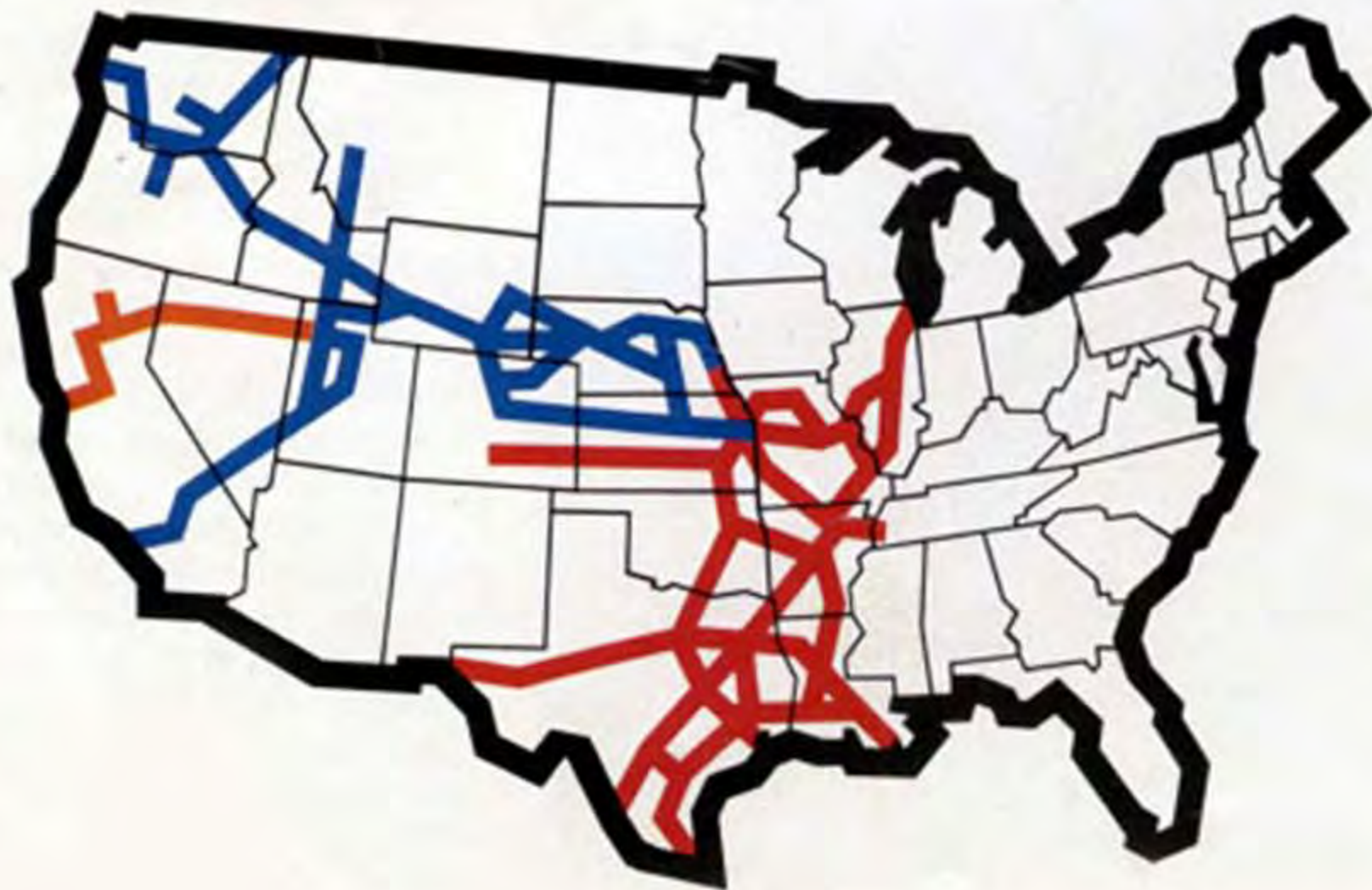




PORTOLA
WESTERN UNION
TELEGRAPH
& CABLE OFFICE

1017 W. 10th St.

	Union Pacific	Missouri Pacific	Western Pacific	Total
Total Mileage	9,287	11,500	1,436	22,223
Car Fleet	61,065	50,200	5,456	116,721
Locomotives	1,503	1,555	144	3,202
No. of Employees	23,177	19,756	2,493	45,426
1981 Revenue	\$ 2.2 Billion	\$ 1.9 Billion	\$188.25 Million	\$ 4.29 Billion
1981 Net Income	\$167.1 Million	\$ 148 Million	\$ 9.1 Million	\$324.2 Million
Revenue Ton Miles	74.84 Billion	58.3 Billion	4.14 Billion	137.28 Billion
Average Length of Haul	717 Miles	441 Miles	408 Miles	



merger confirmed
January 11, 1983

Union Pacific Railroad

Department of Public Relations
1416 Dodge Street
Omaha, NE 68179
(402) 271-3475



Missouri Pacific Railroad

Department of Public Relations
210 North 13th Street
St. Louis, MO 63103
(314) 622-2233



Western Pacific Railroad

Department of Public Relations
526 Mission Street
San Francisco, CA 94105
(415) 982-2100



**FRRS founded February 7, 1983
Museum opened August 25, 1984**



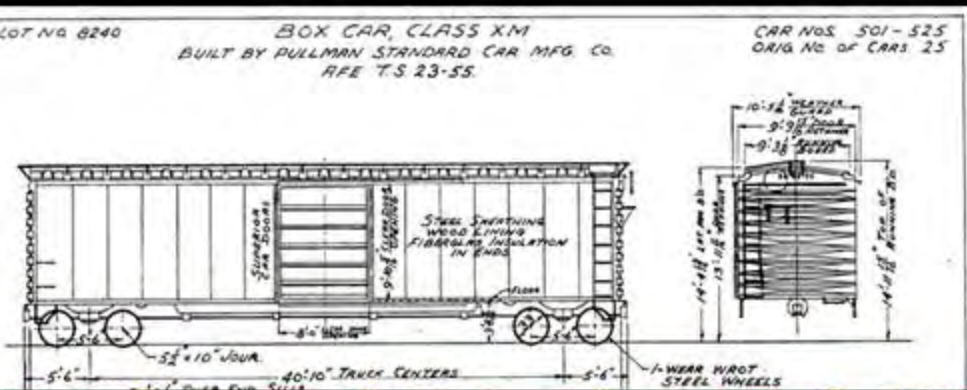
The mission of the FRRS is to preserve the history of the Western Pacific, its corporate family and its people.

Our goal is to share this history and preserve it for future generations.





The FRRS takes pride in being a hands-on, operational museum with an extensive collection of historic equipment as well as an extraordinary archive of photographs, paperwork, historical recordings and other documentation. We carefully cultivate this collection to provide a complete story of the Western Pacific.



WESTERN PACIFIC

SACRAMENTO NORTHERN
TIDEWATER SOUTHERN
RAILWAYS

TIME TABLES

SAN FRANCISCO
OAKLAND
VIA
SALT LAKE CITY
PUEBLO, DENVER
TO
KANSAS CITY, OMAHA
ST. LOUIS, CHICAGO

JUNE 1928

COLLECTION HIGHLIGHTS



Western Pacific
"California Zephyr"
locomotive 805-A



Western Pacific Railroad
Corporate Photo Archive



Western Pacific
first diesel loco 501



Pullman Company 8300
World War II Troop Sleeper



Western Pacific
Red Cross Blood Car
"Charles O. Sweetwood"



Union Pacific *"Centennial"* 6946
world's largest diesel locomotive type





YOU can RUN A LOCOMOTIVE!



WPRM
Western Pacific Railroad Museum
PORTOLA, CALIFORNIA

www.WPLives.org

40 mi to Portola, CA • 530.832.4131

CLEARCHANNEL



Your '52 Jimmy....



WPRM
Western Pacific Railroad Museum
PORTOLA



OUR '52 JIMMY



things to do in plumas county

Rating
★★★★★

Western Pacific Railroad Museum
 4.8 ★★★★★ (7)
 Museum - Western Pacific Way
 Opens at 10:00 AM



The Brewing Lair
 5.0 ★★★★★ (20)
 Brewery - CA-70



Keddie Wye
 4.3 ★★★★★ (6)
 Association or Organization - California 70



Williams Loop
 Real Estate Agency - CA-89




Clio Trestle
 Vista Point - Clio Stal



Spring Garden Tur
 Country Club



Chalet View Lodge
 4.3 ★★★★★ (19)
 3-star hotel - CA-70
 Cozy rooms, plus a pool & a restaurant
 Free Wi-Fi Free breakfast



About pricing Showing results 1 - 12
Update results when map moves



Currently ranked as one of the top tourism draws in the Plumas County region. By some estimates, the WPRM accounts for almost 10% of tourism dollars coming into the county. The WPRM attracts visitors from around the world and is nationally known in the museum community.

JEFFREY BUILDING

This building, the museum's largest display space, will house 6 short trains, each consisting of a locomotive, 4-5 cars, and a caboose, and each representing a different time period in railroad history.

ROUNDHOUSE & TURNTABLE

These functioning structures will be patterned after historic WP designs.

DIESEL SHOP

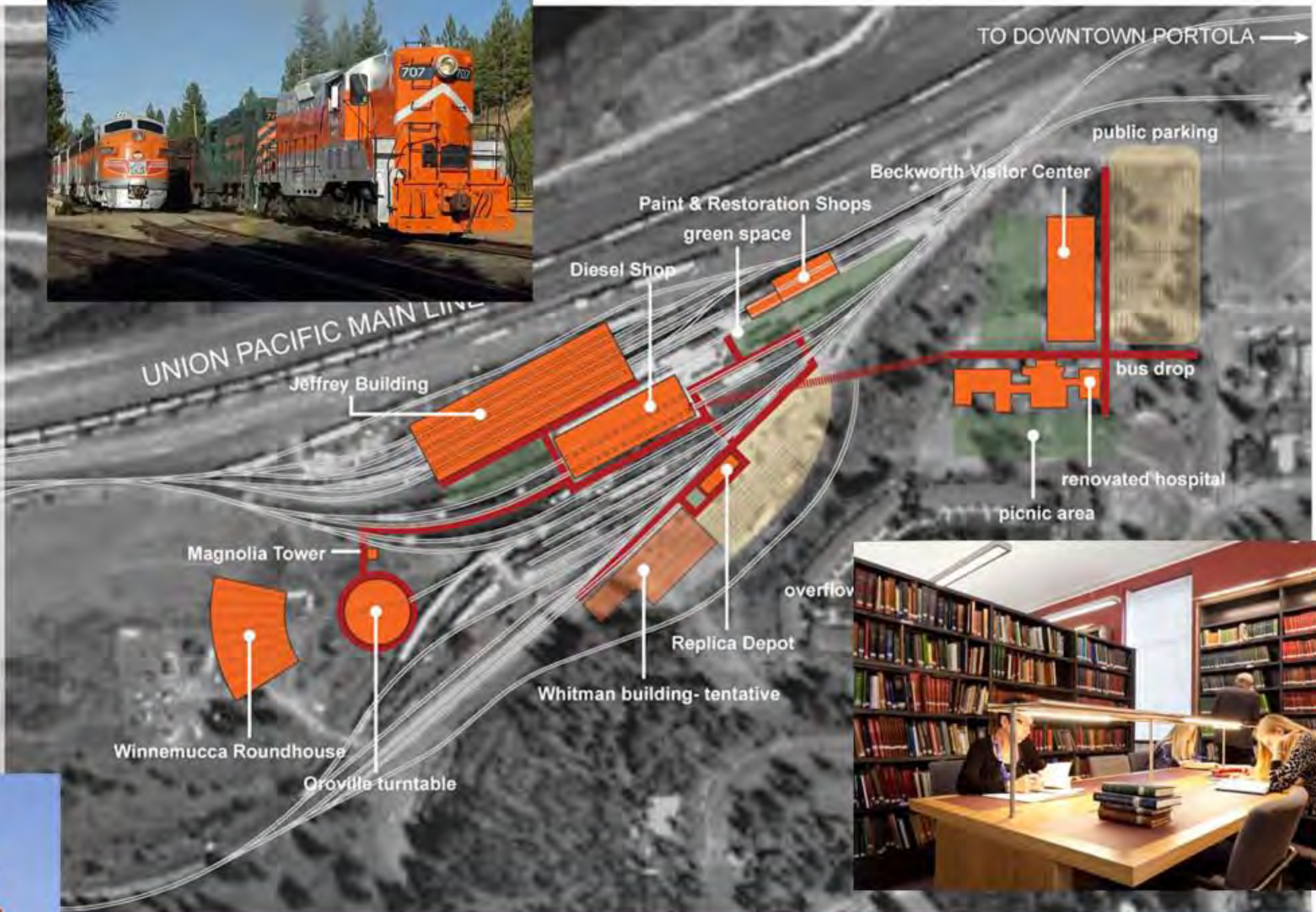
The Diesel shop will be returned to its original function as a working repair shop, which, along with the Restoration and Paint shops, will give the WPRM heavy restoration capability.

REPLICA DEPOT

Patterned after the structure that once served the WP in Feather River, the Depot will house ticketing and gifts for the museum and excursion lines.

BECKWORTH VISITOR CENTER

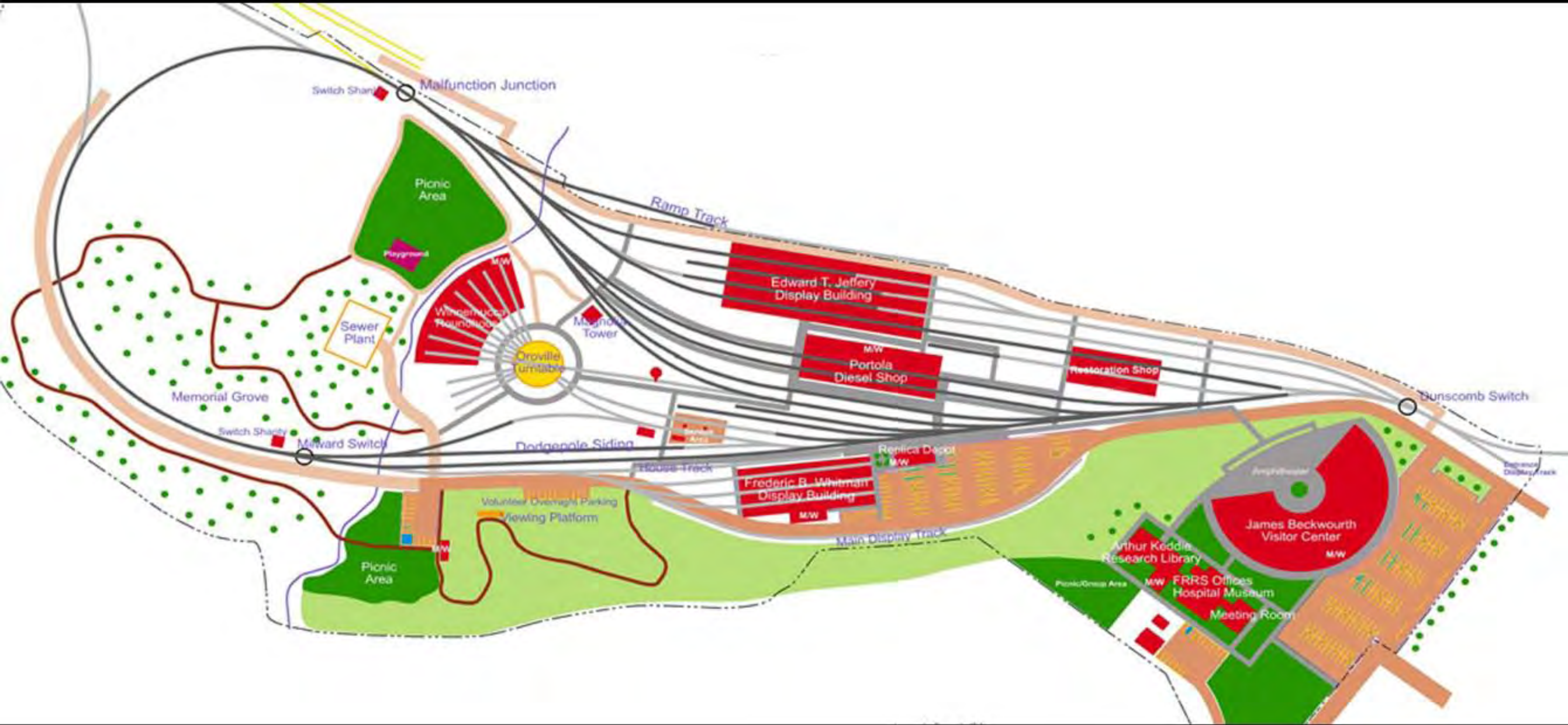
Situated on the hilltop overlooking the main site, the visitor center provides a dramatic entry for visitors, and also houses meeting rooms, amphitheater and exhibits.

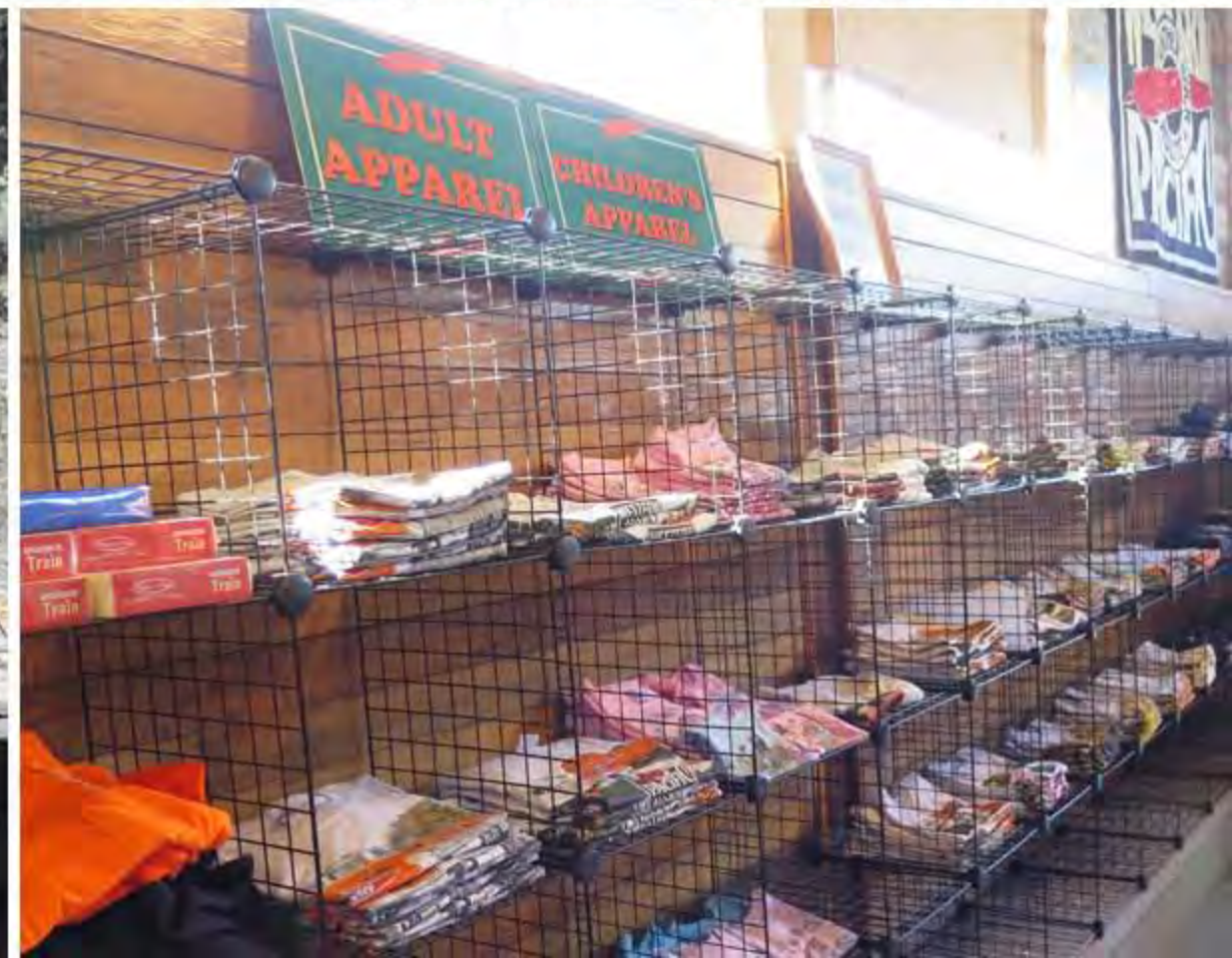


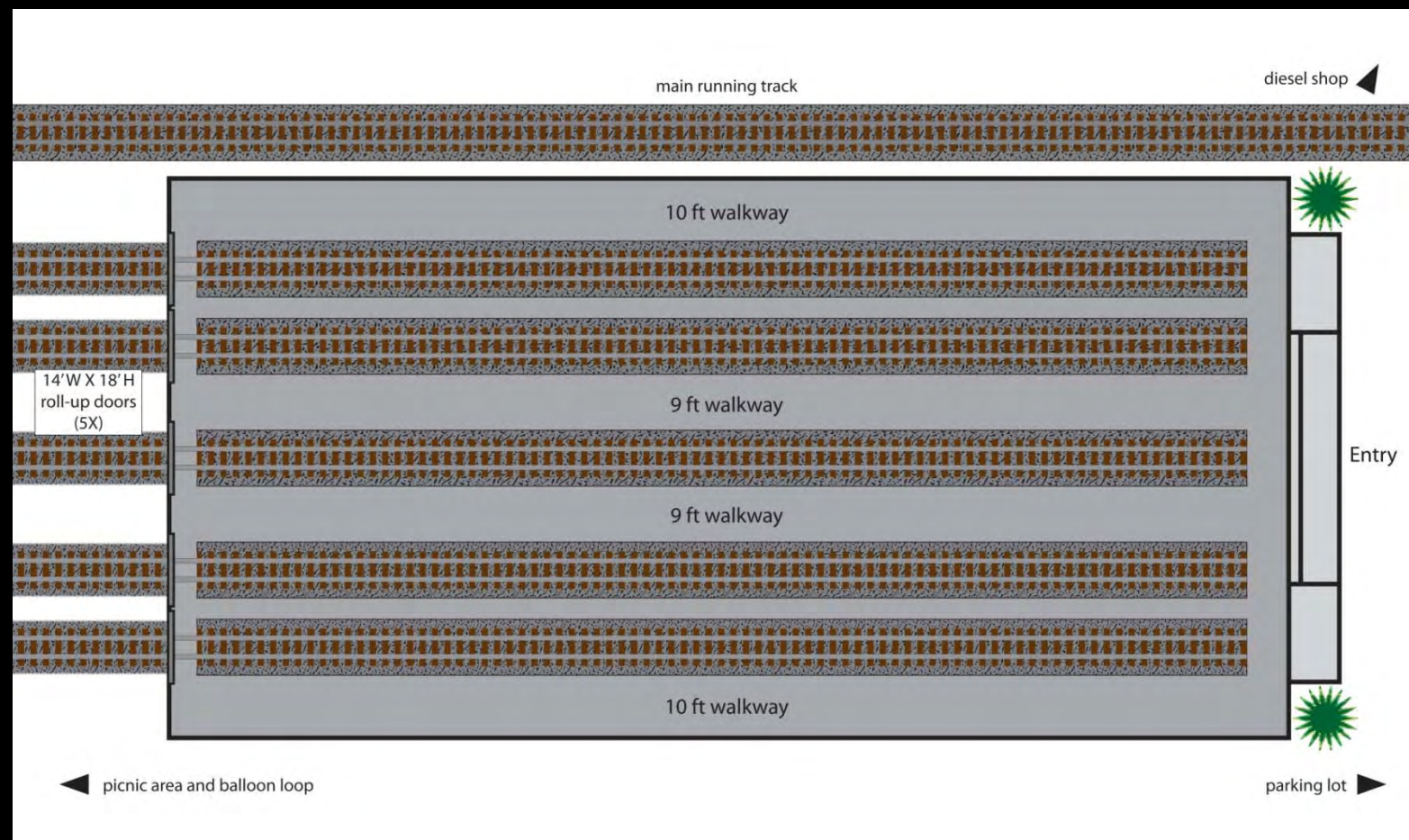
Construction of Winnemucca Roundhouse and Oroville turntable increase engine storage space, serving extended recreational track use. New visitor center adjacent to hospital expands the formal visitor entry area and provides more display space.

WPRM
Western Pacific Railroad Museum
PORTOLA

The Feather River Rail Society's long term goal is to develop the WPRM into one of the premier railroad history operations in North America and to have it play a major and pivotal role in the economic health and development of Plumas County and the related region.

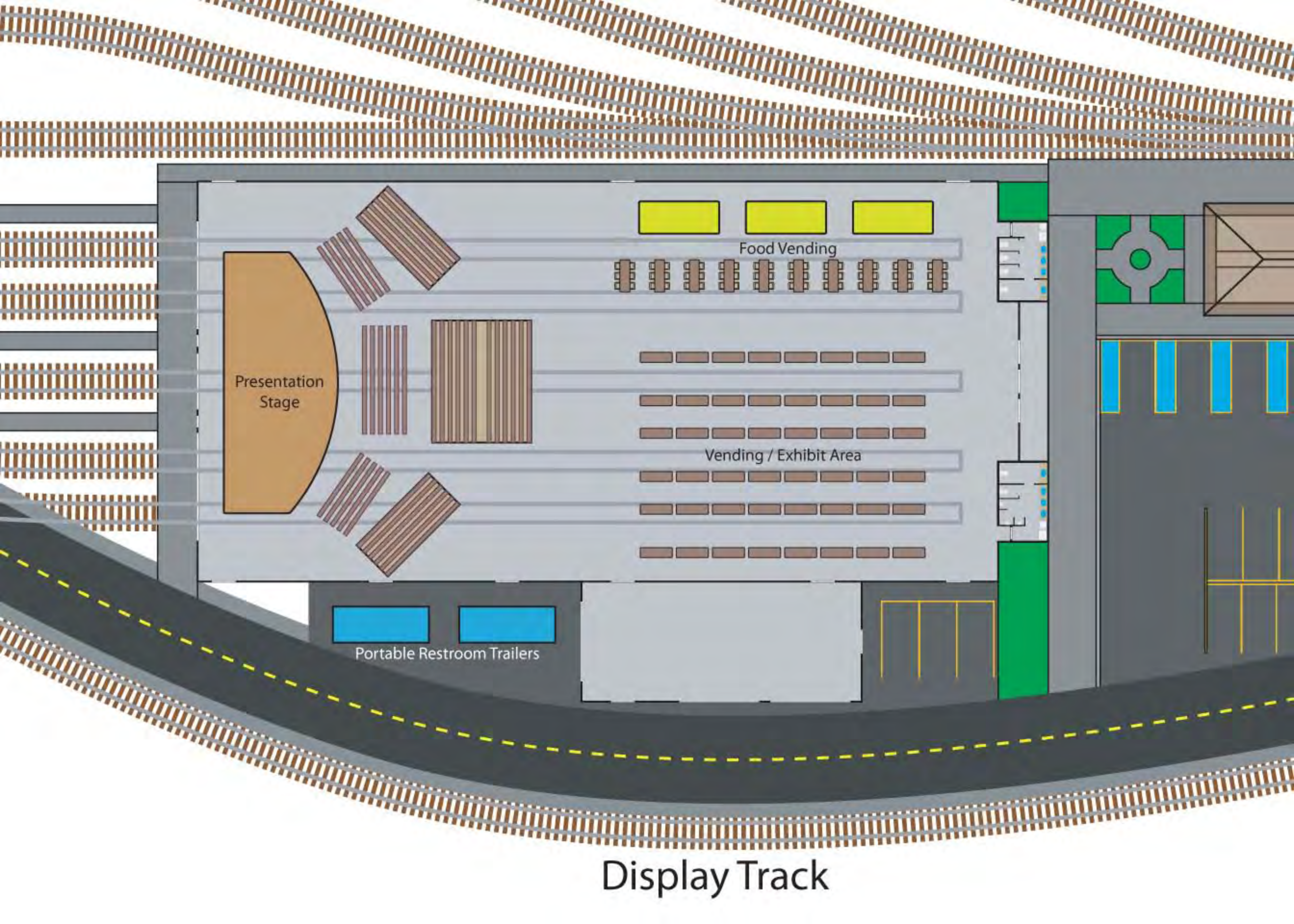








\$1 million
Phase 1 grant



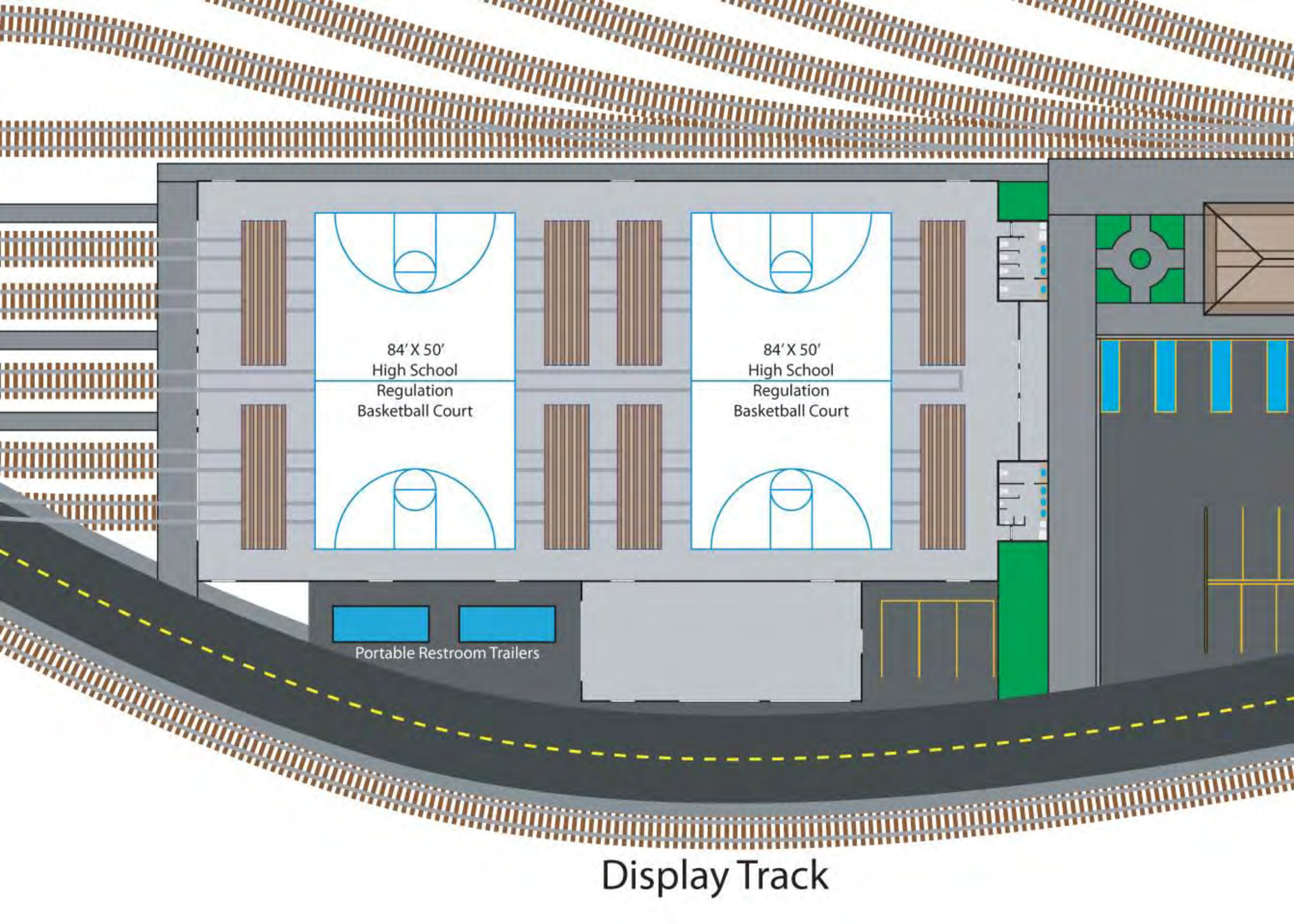
Presentation Stage

Food Vending

Vending / Exhibit Area

Portable Restroom Trailers

Display Track



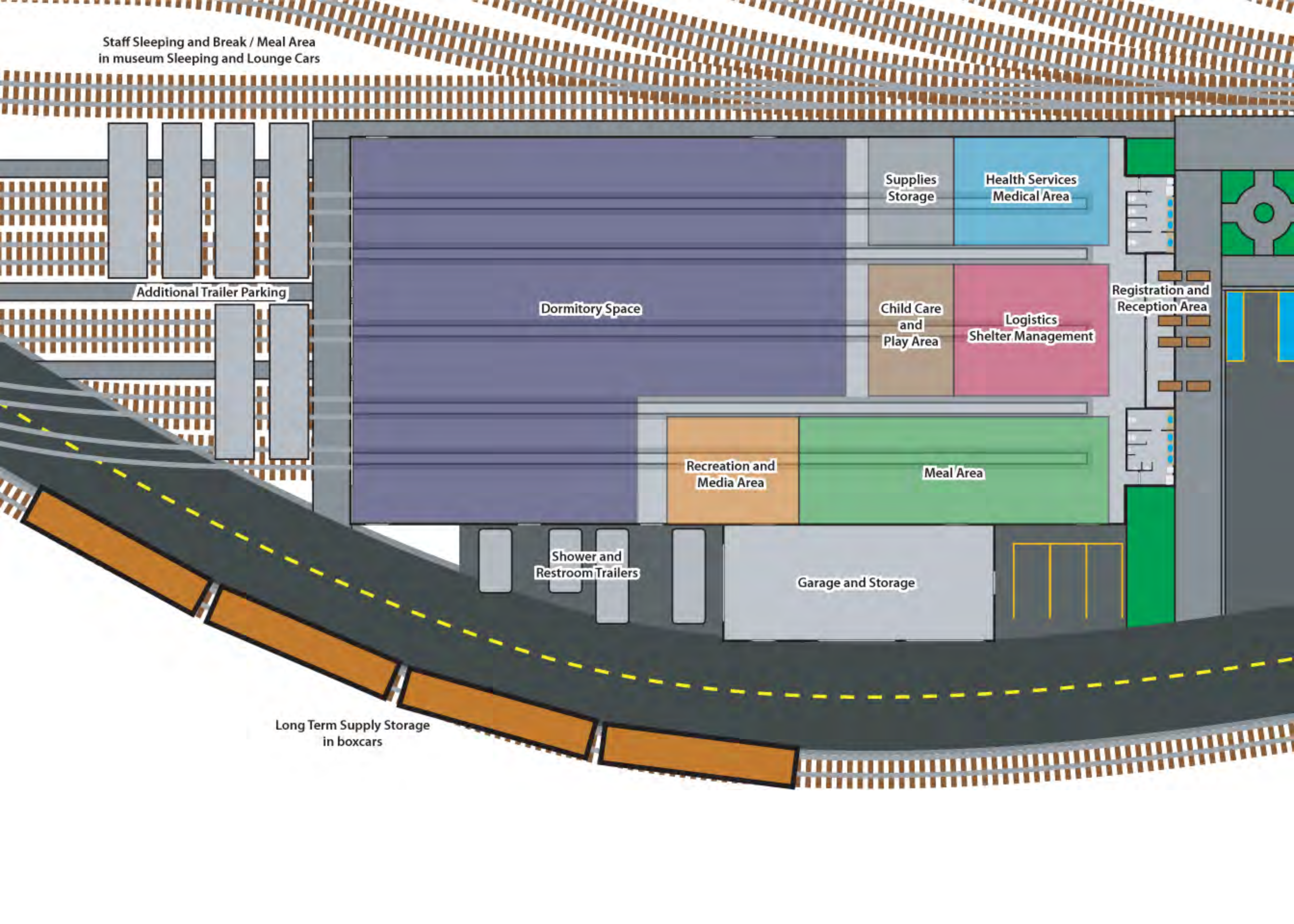
84' X 50'
High School
Regulation
Basketball Court

84' X 50'
High School
Regulation
Basketball Court

Portable Restroom Trailers

Display Track

Staff Sleeping and Break / Meal Area
in museum Sleeping and Lounge Cars



Additional Trailer Parking

Dormitory Space

Supplies
Storage

Health Services
Medical Area

Child Care
and
Play Area

Logistics
Shelter Management

Registration and
Reception Area

Recreation and
Media Area

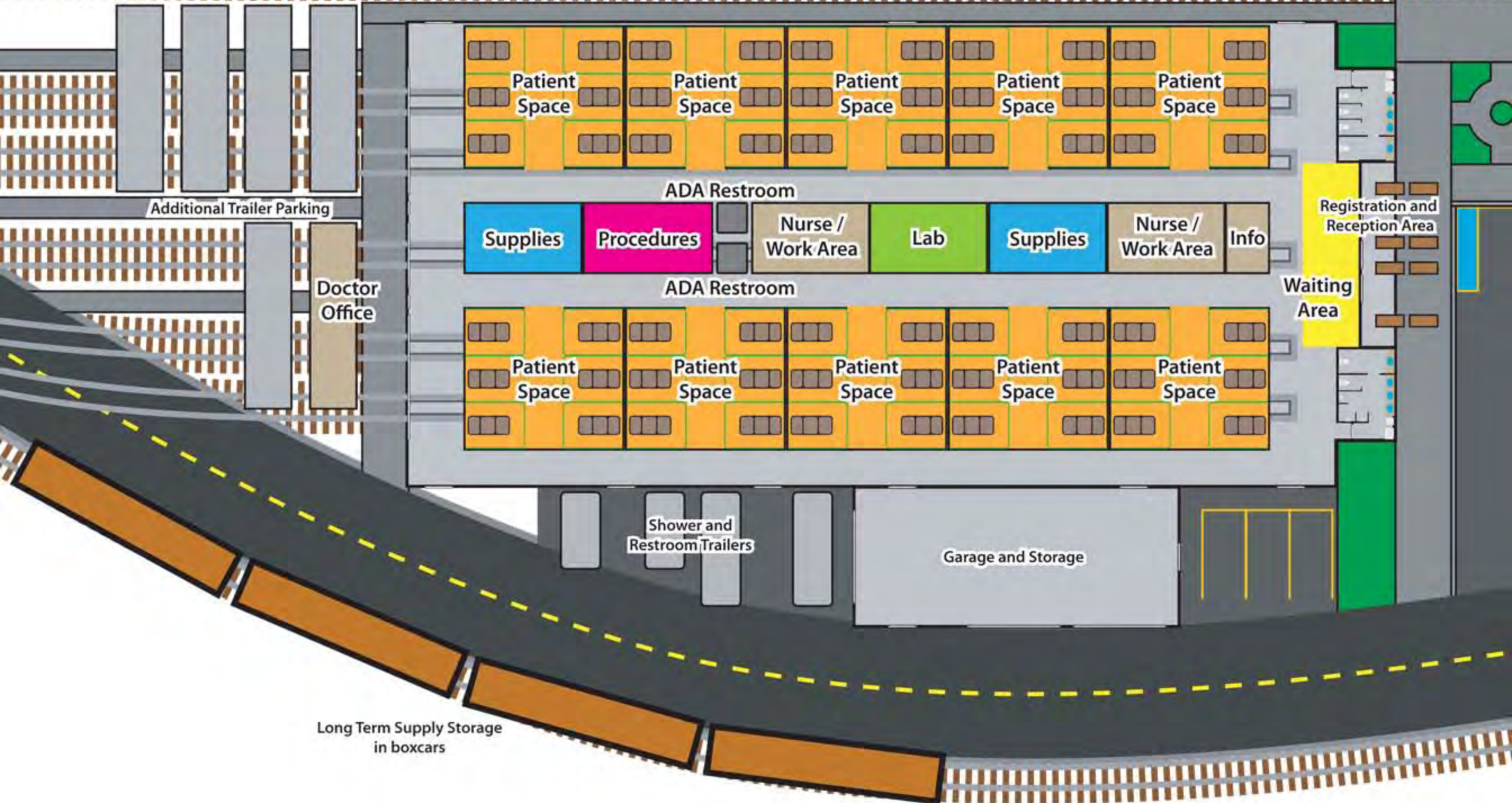
Meal Area

Shower and
Restroom Trailers

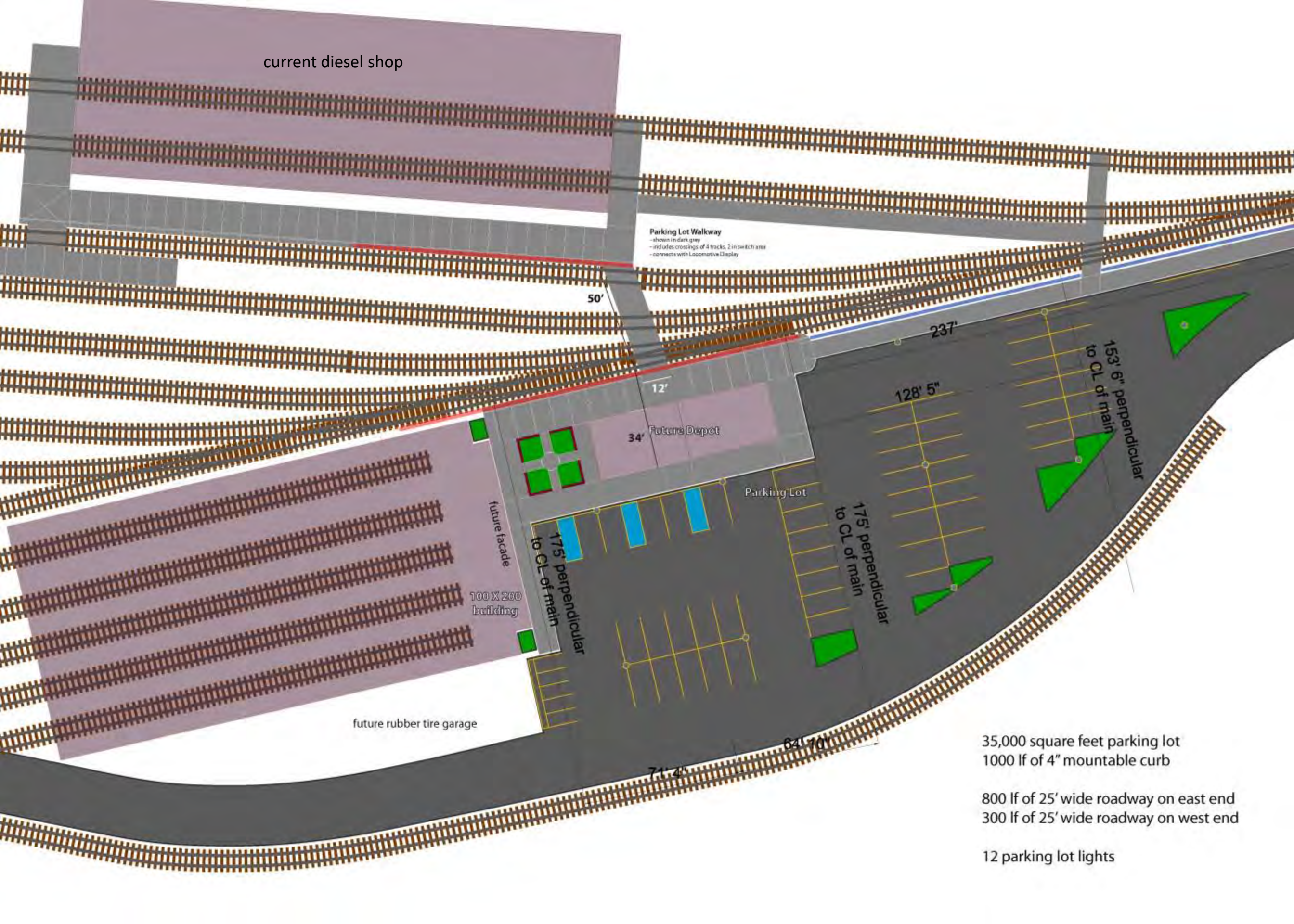
Garage and Storage

Long Term Supply Storage
in boxcars

Staff Sleeping and Break / Meal Area
in museum Sleeping and Lounge Cars



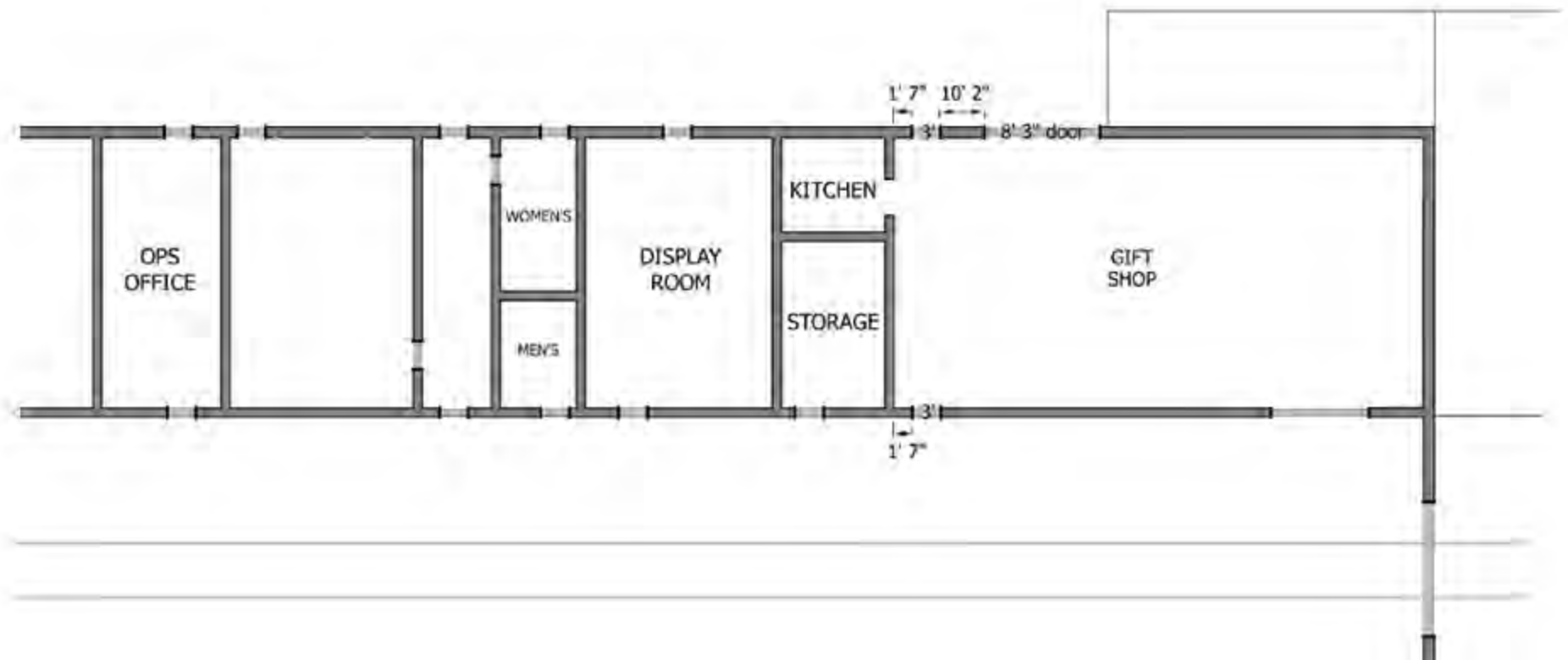
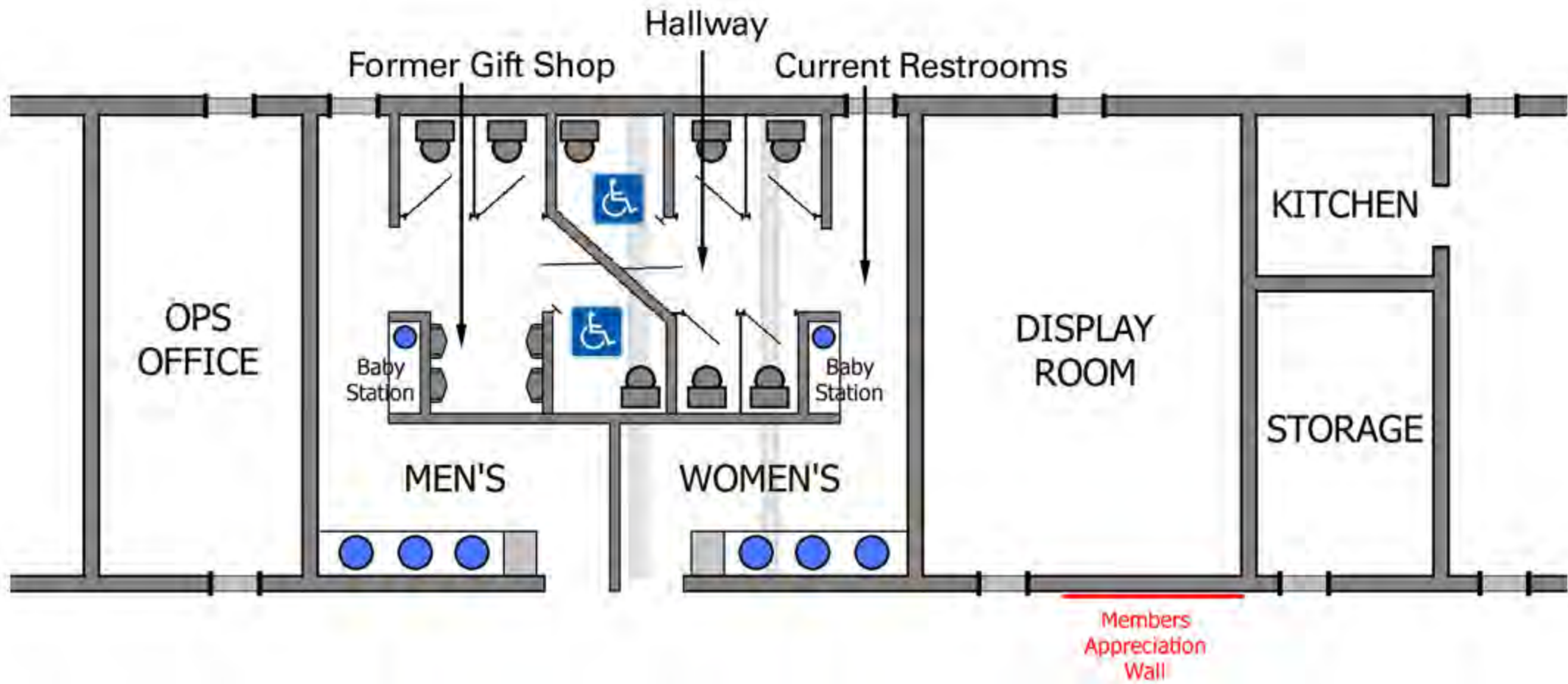
Long Term Supply Storage
in boxcars



35,000 square feet parking lot
 1000 lf of 4" mountable curb

800 lf of 25' wide roadway on east end
 300 lf of 25' wide roadway on west end

12 parking lot lights



POR. SEC. 2, T. 22 N., R. 13 E., M.D.B.&M.

Tax Rate Area
001-001
001-007

126-33

UP owned land

Red - Critical Parcels
1st level of interest

Blue - 3rd level of interest

Green - 2nd level of interest

01

001-007

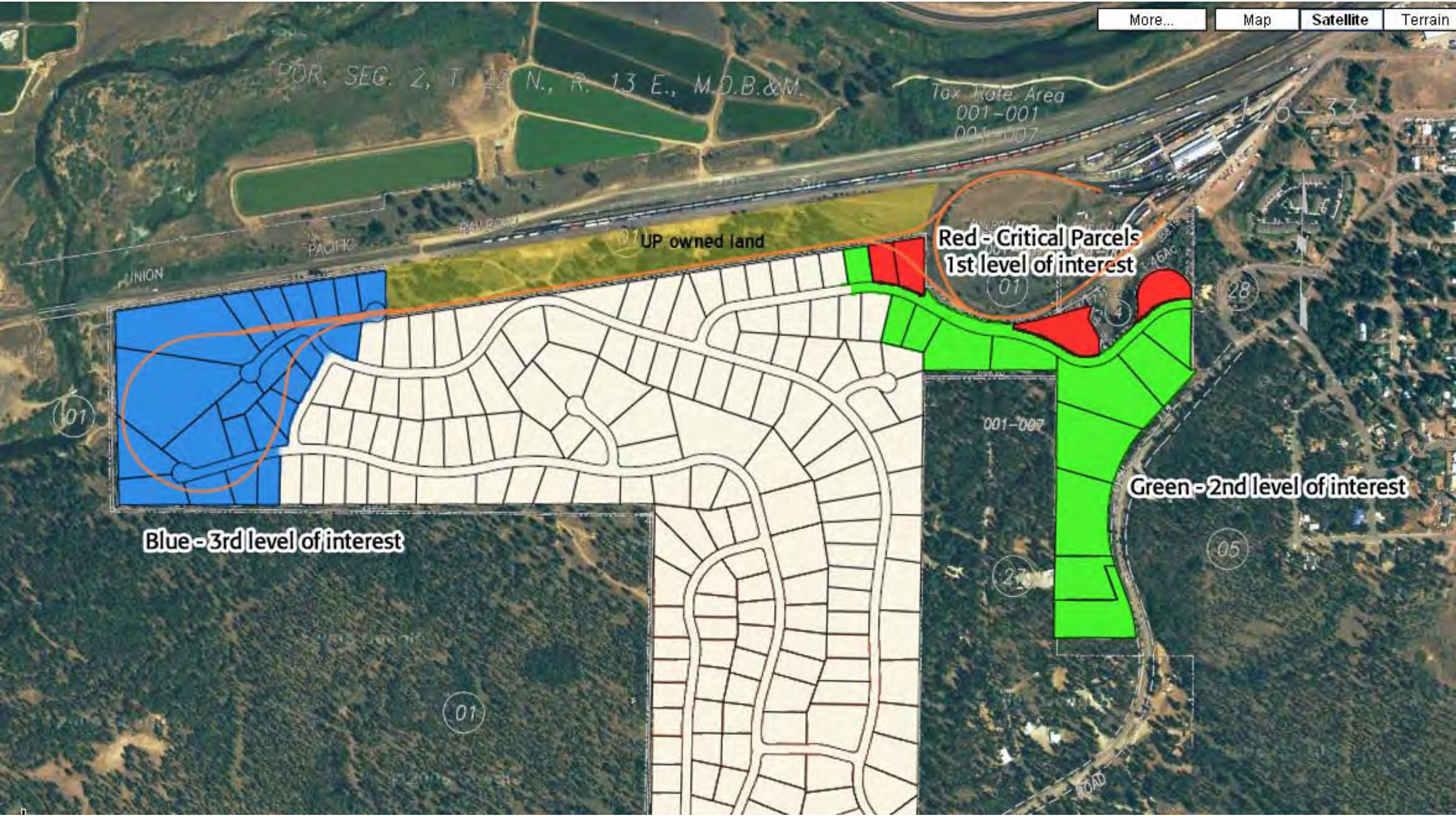
28

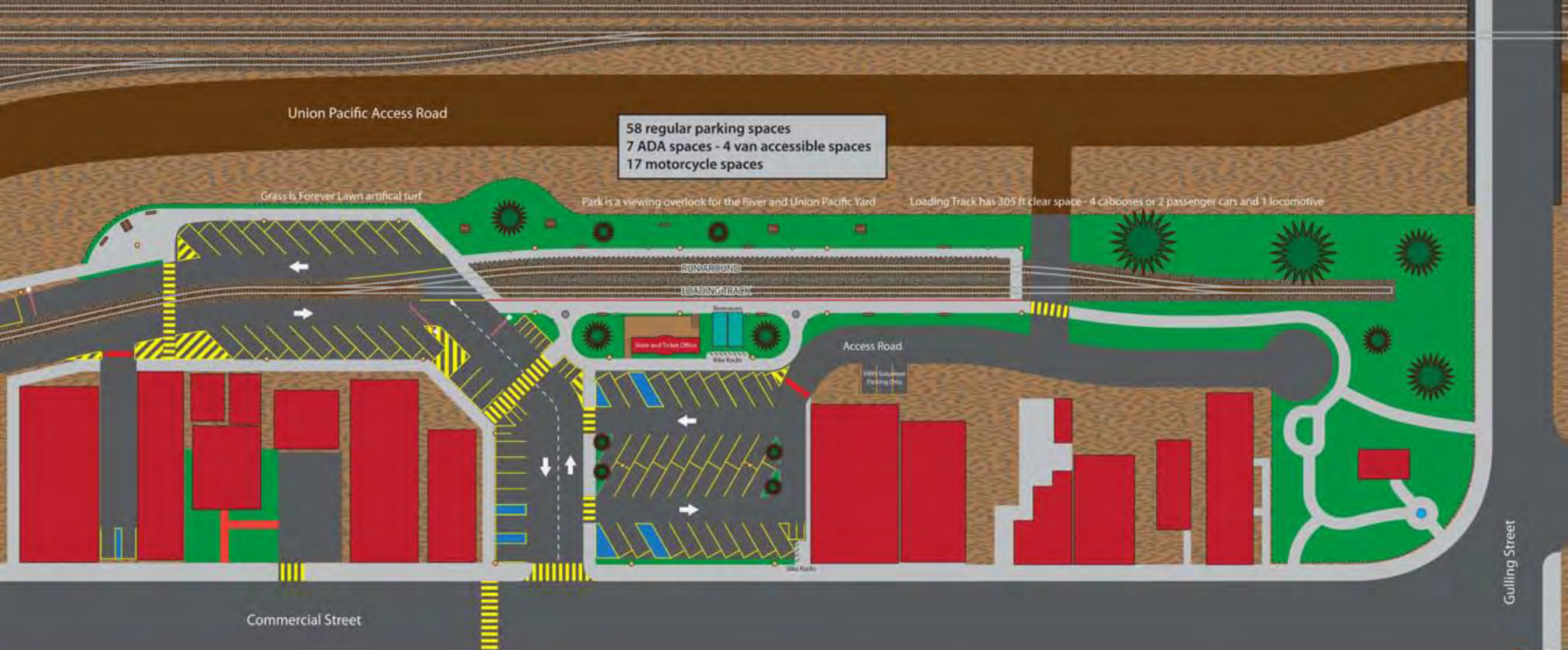
05

01

27

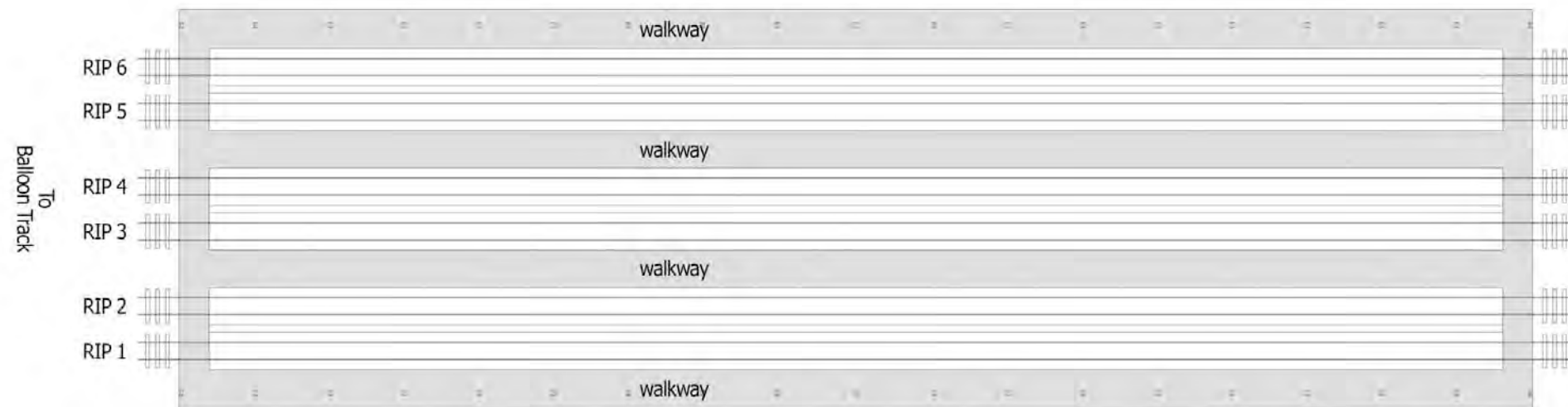
ROAD





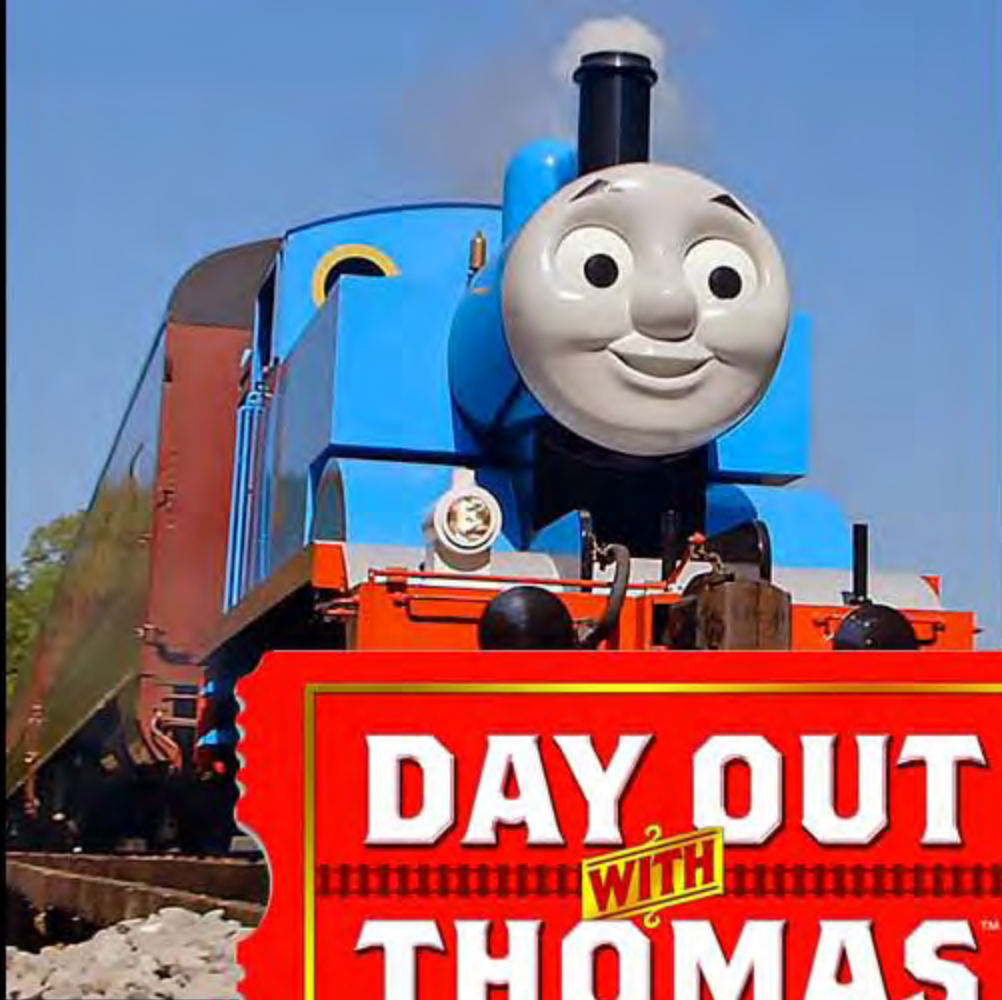


Ground Plan for JEFFREY DISPLAY BUILDING - Phase 1



345' of display length - 363' of overall length





DAY OUT
WITH
THOMAS™

NHD
NATIONAL
HISTORY DAY



HOP ON BOARD
PEANUTS™
THE GREAT PUMPKIN PATCH EXPRESS!





The Railroad Regulators '601' present

TRUCKEE RAILROAD DAYS



- Live Music
- Kid's Carnival
- Arts and Crafts Fair
- Model Train Exhibit
- Gunslinging Entertainment
- Historic Railroad Equipment

Historic Downtown Truckee • September 11-12, 2004
10 AM-5 PM



Thank you!